



Wood End Primary School Curriculum Newsletter

Reception | Spring Term 1 | 2026

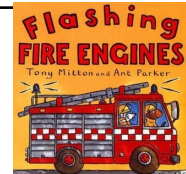
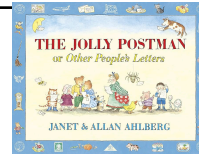
Dear Parents and Carers,

A very Happy New Year and a warm welcome back to Reception! We hope you had an enjoyable and restful break and are ready for the action packed term ahead of us! Our focus for this half term is People Who Help us where we will have opportunities to learn about those who help us in the different areas of our lives; including at home, in school and in our local community. We will also have a visit from the Fire Station.

Please remember to read with your child every night, and to complete their weekly homework. Both of these activities really help to consolidate the learning that your child is taking part in in school each day. Thank you again for your support so far this year. If you have any questions, please do not hesitate to talk speak to your class teacher.

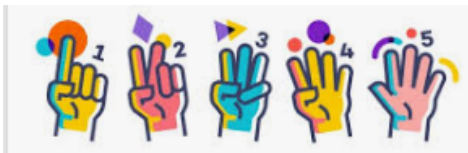
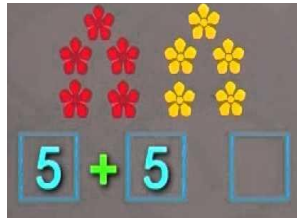
EYFS Team

Some of the stories we will be reading this half term...



Maths

We will be continuing our work on numbers to 10, comparing numbers and adding them.



We will also be looking at composition of numbers and subitising numbers to 10.

Physical development

In our PE lessons, we will be developing and applying our jumping and landing skills as well as working on our seated balance.

This will be done through a series of songs and games, and will also develop the children's ability to play with others and share.



Communication and Language

We will be focusing on exploring new vocabulary and using that in our everyday conversations.

We will also continue our work on talk partners, sharing our ideas and listening and commenting on others ideas.



Phonics

We will continue our work in phonics learning new sounds, and will be focussing on learning digraphs. These are 2 letters that only make one sound.



Understanding the World

We will be looking at different people who help us, and learning about lots of different occupations.



We will also be marking some celebrations such as Chinese New Year



Literacy

We will be using our phonics to read and write simple sentences.



PSED

As we are now settled in school and have learned all about our new friends and classmates, we are going to be focussing on following the school rules and expectations without adult prompting.

We will also continue to work on understanding our feelings and being able to express them.



EAD

As part of our learning, we will continue to explore and learn new songs and music.

We will be practising combining different materials in our junk modelling and art area.



